

THE QUILL

Easter-Pentecost-Summer, 2011



Next Quill:

Homecoming-Michaelmas--
(Mid-September-Mid Nov.)

Deadline: Sept.1

Canon Jim's Jottings

Alleluia! Christ is Risen! He is risen indeed! Alleluia!
This issue of the Quill covers the period that begins with the Great 50 Days of Easter - Eastertide, as well as the Day of Pentecost and Trinity Sunday, and ends with the summer "ordinary time" months of July & August. It is also the transition from spring to summer. It is a time of graduations and increasingly warmer weather. There are a number of major events happening during this season:

There will be much happening, so, first I want to have a "Save the Date" moment. (More about each of these further down):

May 21-22: Patronal Weekend –

- Saturday morning: Living & Dying - Making Preparations
- Saturday afternoon: Needlers of Bede to Hillside Home
- Sunday evening: Festival Choral evensong

June 3-5: The 2nd Annual Women of Bede Retreat

June 11: Parish Caretaking Day in the morning (including the Rector's homemade chili)

June 26: Bishop Glasspool's visitation AND the Friends of Music Summer Music Concert at 7 p.m.

September 18: Homecoming Sunday

EASTERTIDE

(I am repeating this from last year because of the number of questions I was asked following the Easter Vigil service)

The most ancient and most central celebration of our faith is Easter. The Great Vigil of Easter - celebrated at 6.30 a.m. on Easter morning is the archetypal service on which each

Continued on Page 2~

~"Jottings," Continued from Page 1

Sunday eucharist is based. It has four components: light - salvation - baptism - eucharist.

The "light" is the Jesus who we proclaim and whose presence gathers us in community each Sunday. On the first Easter, Jesus was apprehended by his followers at the tomb, at a meal and in community.

"Salvation" is the story of our salvation history. It refers to "the scriptures" which are so often referred to in the New Testament. When Jesus met the travelers on the Road to Emmaus, he again shared the stories of salvation from the Hebrew scriptures.

The community which gathers to proclaim Jesus in their midst is the "Baptismal Community". Baptism is the outward and visible sign that we are members of that community. At the Vigil (and at other times), we either baptize new Christians or renew our baptismal vows, reminding ourselves of our vocations as Christians.

Since the earliest days of the Church, Christians have gathered to share bread and wine in remembrance of Jesus' actions at the Last Supper (or as Vicki once said, the "New Supper"). In fact, sharing in remembrance of Jesus is precisely what makes this gathering a Christian event. As Archbishop Tutu has said, "...the Body of Christ gathers to receive the Body of Christ so that its members may go into the world to be the Body of Christ".

In Easter, there are some liturgical changes. The kneelers are put away and our services do not include a general confession. This remembers that early councils of the Church believed that the Great Fifty Days of Easter were so special, so celebratory that postures and words of penitence were not appropriate.

LIFE AND DEATH PLANNING - MAKING PREPARATIONS

Periodically, we meet to talk about the preparations we all have to make for the last stage of our lives. I have found a very comprehensive new booklet published by The Forward Movement entitled "Preparing for Death: Instructions for Your Survivors". While I wish it was a bit more flowery in its title, it IS direct and to the point. **We will distribute the book and have a discussion on this on Saturday morning, May 21 from 10 a.m. to Noon in the Chapel.**

PICTORIAL DIRECTORY

The long-awaited pictorial directory will be published and ready by the time of our Patronal Evensong on May 22. One copy will be available to each household (a \$5 contribution is suggested). Further copies will be available from the office for \$7.50 each). Eventually, a blown up version will be posted in the parish hall and the directory will also be available on the website when it is redesigned.

PATRONAL EVENSONG

Our annual Patronal Evensong will be held on Sunday, May 21 at 6 p.m. on Sunday, May 16 at 6 p.m. He will preside and preach. The music at that service will be by Robert Scheiblhofer and A. H. Brewer. We will also be taking up the annual collection for *The St. Bede's Church Birthday Memorial Outreach Fund* - this year celebrating our 45th Birthday. A letter will be coming out shortly about this collection.

[Note: our "red food event" this year will be a pot-luck "red coffee hour" on Pentecost, Sunday June 12.]

CARETAKING

Yes, it's the new term for a work day, but we need to take care of the property - things to wash, throw, pull, trip, move, clean, etc. I will be making homemade bread and chili to entice you to work on the morning of the 11th of June! Come one, come all!!!

THE BISHOP'S VISITATION

June 26 will mark the day of the Bishop's official visitation to the parish. This year, Bishop Mary Douglas Glasspool, Bishop Suffragan, will be with us. Bishop Glasspool was consecrated last May and works with Bishop Bruno, Bishop Diocesan and Bishop Bruce, Bishop Suffragan. Bishop Glasspool will meet with the Vestry at 9 a.m. after she arrives. Following the 10 a.m. service, she will be at the Coffee-Hour to meet with members of the parish and to answer any questions that you might have. Prior to her departure, she will review all of the records and sign all of the official registers.

During the service, there will be an opportunity to be confirmed or received into the Episcopal Church and/or to reaffirm one's Baptismal Vows (BCP, pg. 413-419). If you wish to be confirmed or received and/or to reaffirm your vows, please talk with me no later than June 5.

[Please note, there will be one Eucharistic service on June 26 - the 8 a.m. service will be Morning Prayer.]

~"Jottings," Continued from Page 2

FRIENDS OF MUSIC

The final event of the Friends of Music's 15th Season will be the annual "summer pops" concert. This year, "A Musical Mystery Encore" will be presented for this 7 p.m. event on Sunday, June 26. See the announcement elsewhere in this issue of the Quill.

Congratulations to former associates: **The Rev. Dr. Giovan King** has begun her ministry at the Rector of St. Christopher's Parish in Kailua, HI (Oahu). **The Rev. Jason Cox** is moving to Washington, D.C. in June as his ministry with the Episcopal Urban Intern Program concludes and he seeks a new position. We wish him well!!

The first Saturday in June is very important - it is the Education for Ministry Annual graduation service at the Cathedral Center of St. Paul. This year, one of the graduates will be our own Ina Klem who will have completed this four-year program. Congratulations!!

I wish Vicki well with her "big event" in June - the marriage of her daughter Samantha on June 26 (a big weekend all around). She will not be around the parish much in the days before the wedding - both bride's mother, party coordinator and celebrant - whew!

I will be taking two weekends off to see plays in Oregon - June 17-19 and July 22-24 and then will take my vacation on August 20-September 5 (this year in Colorado and New Mexico).

In Christ,

Jim Newman

Out and About Or Home on the Range

By Mthr. Vicki

KIDS OF BEDE: As we wind down our Sunday School year, we will enjoy a **Kids of Bede Movie Night on Saturday, June 18, at 4:00 p.m. at the Vaughn's home.** (Movie TBA as soon as possible.) Friends and family are welcome! As usual we will enjoy pizza (\$3.00 per person) and parents are invited to bring snacks, goodies, and beverages. Our last Sunday School day will be June 26 and we will resume again September 11. I wish to thank Adelaide Vaughn, Amy Dugre, and Samira Tamer for their fabulous work as Sunday School teachers, and Adelaide as well for her musical work with the kids!! We are blessed at St. Bede's to have you all in support of our program!

WOMEN OF BEDE:

The Women of Bede and friends enjoyed a wonderful time at the **California Poppy Reserve.** We did survive the wind and cold to see some poppies and other wild flowers under the guidance of a wonderful park ranger. We celebrated the Eucharist and had lunch together before setting off for home. **COMING UP: 2ND ANNUAL WOMEN OF BEDE RETREAT!** We will gather at the Mary and Joseph Retreat Center in Rancho Palos Verdes on Saturday morning June 4 at 9:00 a.m. sharp. Commuters will leave at 9:00 p.m. and those spending the night will leave Sunday after lunch. Our theme this year is *Abide with Me.* We will have worship, group sessions, small groups, labyrinth workshop, music, happy hour, meals, shopping, and free time. It will be a wonderful time for refreshment and fellowship! You can still join as a commuter by signing up on the posted sheet in the Parish Hall and enclosing a check made out to St. Bede's for \$50.00 in the envelope provided. Please call if you have questions: Mthr. Vicki at (310) 625-7364.

NEEDLERS OF BEDE: Needlers have been busy making things for our November sale to benefit St. Bede's. We are creating items in the colors used in our beautiful St. Bede icon. We look forward to parishioners and friends sporting our goods! We are also making items again for the children at Hillside for Christmas. Join us! **Our meeting hours are now**

~"Out and About," Continued from Page 3

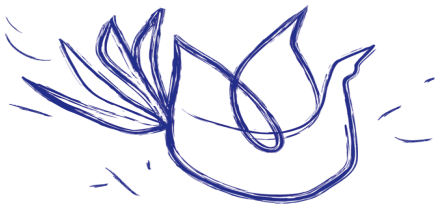
3:00 - 5:00 p.m. on the following Sundays this summer: June 12 and 19; July 10 and 24; August 7 and 21. All are welcome to be a part even if you wish to create at home and not at church. (Speak either to me or Gina Turella.) Needlers will be touring Hillside on May 21, so if you have any questions about the home, please ask us.

MOVIE GOERS: The next movie night at St. Bede's will be on **Saturday, June 11, at 5:00 p.m.** In the Parish Hall. We will first watch our movie, *Father of the Bride* starring Diane Keaton and Steve Martin and then enjoy a potluck dinner. Join us! Friends are more than welcome! **Summer movie nights will be Sundays, July 31 and August 28, both at 4:00 p.m.** Movies TBA.

SPECIAL EVENT: *The Sound of Music Sing-Along at the Hollywood Bowl!!* This special event will be on **Saturday, September 24.** The pre-show (costume parade, etc.) begins at 6:00 p.m. and the film begins at 7:30 p.m. We will picnic ahead of time in a reserved location. Ticket price is \$30.00 per person and fifty (50) tickets have been reserved in the M/N sections for St. Bede's. **The deadline for ticket purchase is Sunday, August 7.** A sign-up sheet and information (including park and ride) will be posted in the Parish Hall along with an envelope for your checks (payable to St. Bede's with *Sound of Music* in the memo line.) This is a wonderful evening! Join us! Costumes welcome!

In Christ's love,

Mthr. Vicki



A Note from the St. John's Guild~

The members of St. John's Guild wish to thank everyone who has either donated or bought jewelry from the jewelry board in Luther Hall. Our jewelry supply is running very low so please consider a donation of jewelry to this worthy cause. The money we make goes to buy kitchen supplies and to fund the nursery. Please give the jewelry to Ina Klem, Rea Crane, Janet Fox, Jeannette Young or Joyce Matlack or drop it off in the church office.



St. Bede's at Turning Point-OPCC

Members of the parish will serve dinner at Turning Point on the following Sundays in 2011:

May 29

June 19

July 31

September 11

October 23

November 13

Established in 1983, Turning Point Transitional Housing is a 55-bed shelter for homeless men and women that offers housing and supportive services for up to 9 months. The project seeks to break the cycle of homelessness and to integrate homeless individuals back into the community by providing comprehensive, individualized services designed to address their physical and emotional needs.

In addition to an individual sleeping area, three meals a day and clothing, Turning Point provides intensive case management, counseling and support groups, specialized programs such as job counseling, money management, health education, computer classes and independent living skills.

Turning Point is one of the many programs provided by OPCC (Ocean Park Community Center), the largest and most comprehensive provider of services on the Westside to low income and homeless youth, adults and families, battered women and their children, and people living with mental illness.



The Bible in 50 Words~

God made, Adam bit,

Noah arked, Abraham split,

Joseph ruled, Jacob fooled,

bush talked, Moses balked,

Pharaoh plagued, people walked,

sea divided, tablets guided,

promise landed,

Saul freaked, David peeked,

prophets warned, Jesus born,

God walked, love talked,

anger crucified, hope died,

Love rose, Spirit flamed,

Word spread, God remained.

SERVICES & CLASSES

SUNDAYS: 8 am, Holy Eucharist (no music)
10 am, Church School and Nursery
10 am, Holy Eucharist (w/choir)
6 pm, Evensong or Evening Prayer

WEDNESDAYS: 7 pm, Holy Eucharist & Healing
7:45 pm, Adult Class

TUESDAY BREAKFAST & BIBLE:

9 a.m.: Breakfast and study of the upcoming Sunday's lessons
*Not meeting on 5/3 or 17; no meetings in July & August

WEDNESDAY EVENING FORUM:

"The History of Christianity in the Reformation Era" with Prof. Brad Gregory
5/4 Defending the Traditional Order – Early Catholic Response
5/11 The Rise and Fall of the Kingdom of Münster
5/18 John Calvin & the Reformation in Geneva
5/25 Catholic Renewal & Reform in Italy
6/1 The Growth & Embattlement of Protestantism
6/8 Calvinism in France & the Low Countries
6/15 John Knox & the Scottish Reformation
6/22 Menno Simons & the Dutch Mennonites
6/29 The Council of Trent
7/6 Roman Catholicism after Trent

VIA MEDIA – Introduction to the Episcopal Church

5/1, 8, & 15 - Sessions 6, 7, & 8 in the Library at noon on Sunday

BOOKWORMS OF BEDE:

5/16: The Lemon Tree: An Arab, a Jew, and the Heart of the Middle East by Sandy Tolan
7/18: no class
9/19: tba

ST. BEDE'S STAFF & VESTRY

STAFF

RECTOR: The Very Rev. Canon James Newman
ASSISTANT: The Rev. Victoria Mouradian
MUSIC DIRECTOR: Frank Basile
VERGER: Michael Gallagher
HEAD SACRISTAN: Jeannette Young
FACILITIES MANAGER: Tom Ledsam
SEXTON: Joaquin Perez
NURSERY CARE: RoseMarie DiSalvo

VESTRY

Rea Crane ('12) - Senior Warden
Carly Portalupi ('13) - Junior Warden
Christoph Dugré ('12)- Treasurer
Jerry Hornof ('13) Liz Mohler ('12)
Christine Reynaert ('13) Phil Schultz ('13)
Alice Short ('12) Gina Turella ('12)
Annette Graw - Clerk
Jennine Townsend - Financial Secretary

CONVENTION DELEGATES/ALTERNATES

Annette Graw (D)/ Kyle Ferstead (A) ('13)
Jerry Hornof (A)/Frank Basile (A) - ('12)
Gina Turella (A)/Carly Portalupi (D) - ('13)

The Quill

St. Bede's Episcopal Church
The Parish of Mar Vista, Venice, Ocean Park, and Playa Vista

ADDRESS SERVICE REQUESTED
3590 Grand View Blvd.
Los Angeles, CA 90066

www.stbedesla.org